

Undercounter Freezers

Exceptional Quality 2 Years Parts and Labor Warranty



TUF-28SD



TUF-48SD



TUF-60SD

≡ FEATURES / BENEFITS ≡

■ **EFFICIENT REFRIGERATION SYSTEM**

Turbo Air's solid door freezers are designed with oversized and balanced (CFC Free R-404A) refrigeration systems. These include efficient evaporators and condensers for faster freezing and greater efficiency.

■ **STAINLESS STEEL LOUVER**

Built to withstand food acids and stains, stainless steel louvers ensure even distribution of cold air throughout the interior of the unit.

■ **STAINLESS STEEL CABINET CONSTRUCTION**

The Turbo Air Super Deluxe model boasts a stainless steel interior and exterior (except the back). It guarantees the utmost in cleanliness and long product life. The Super Deluxe can add a touch of style to the most refined setting.

■ **HIGH-DENSITY POLYURETHANE INSULATION**

The entire cabinet structure and solid doors are formed-in-place using high density, CFC free polyurethane insulation.

■ **STURDY, CLEAN STAINLESS SHELVING**

Shelves are the most important part of cleanliness as they come in direct contact with food. After a while, PVC coated wire shelves may peel, rust and lead to unsanitary conditions. Only the Turbo Air Super Deluxe series uniquely provides stainless shelving.

■ **ERGONOMICALLY DESIGNED DOOR**

Customers' fatigue fades away with easy grip handles and doors that open effortlessly. These features along with self-closing doors make this the ultimate choice in customer convenience. ABS sheet door liners resist water condensation with thermal efficiency.

■ **MAGNETIC DOOR GASKET**

Magnetic door gaskets are of one piece construction, removable without tools for ease of cleaning and replacement.

■ **HOT GAS CONDENSATE SYSTEM**

Through Turbo Air's creative innovation, the condensate system surfaces have been specially treated to resist corrosion. This not only increases efficiency without the risk refrigerant leakage from corrosion, but also prevents the overflow of condensate water.

*** Incandescent Interior Lighting**

■ **FREEZER HOLDS -5°F ~ -10°F FOR THE BEST IN FROZEN FOOD PRESERVATION**

Model	Swing Door	CU./FT.	#of Shelves	HP	AMPS	Crated Weight	L D H
TUF-28SD	1	7	1	1/3	53	168	27 1/2 x 30 x 30 1/3
TUF-48SD	2	12	2	1/2	83	265	48 2/9 x 30 x 30 1/3
TUF-60SD	2	16	2	1/2	9.0	287	60 1/4 x 30 x 30 1/3

* Height does not include 6" for caster height.

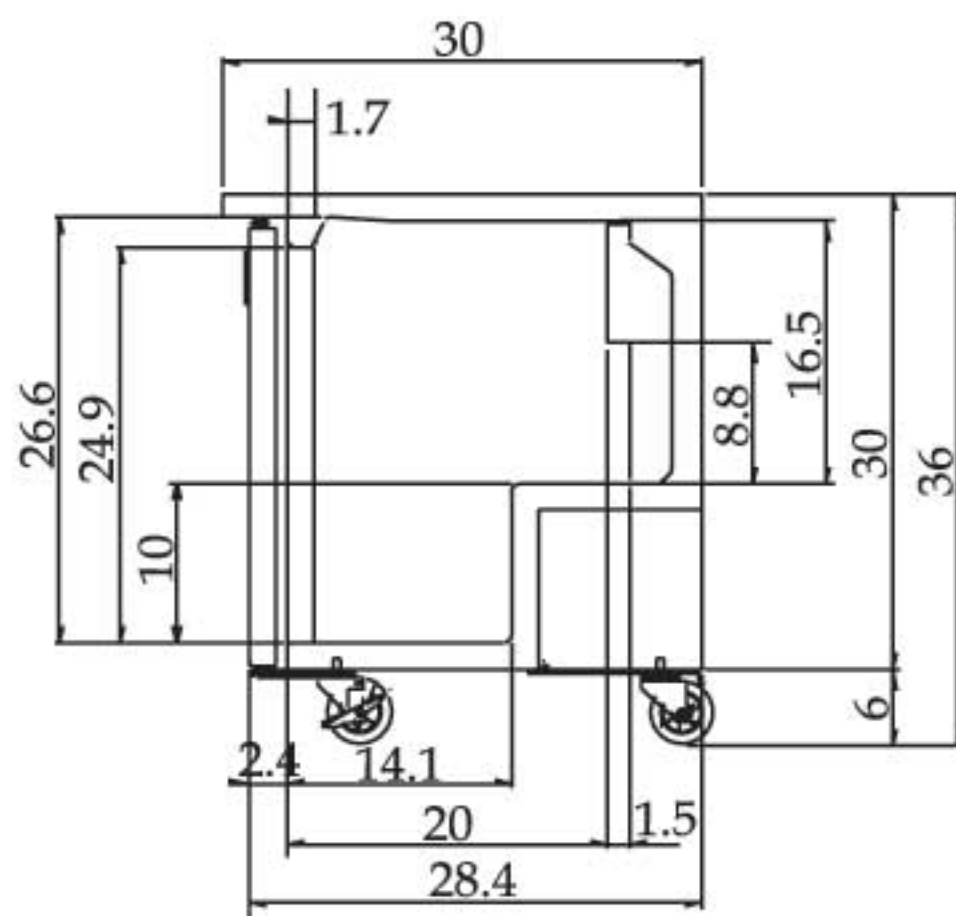
TUF-28SD / TUF-48SD / TUF-60SD SPECIFICATIONS

MODEL	TUF-28SD	TUF-48SD	TUF-60SD
Exterior Dimension(LxDxH)	27 ¹ / ₂ x30x30 ¹ / ₃	48 ² / ₉ x30x30 ¹ / ₃	60 ¹ / ₄ x30x30 ¹ / ₃
Cubic Feet	7	12	16
Compressor (HP)	1/3	1/2	1/2
Shelves	1 ea	2 ea	2 ea
Net Weight	150lbs	221lbs	262lbs
Voltage (i) NEMA-5-15P	(i)115V / 60Hz	(i)115V / 60Hz	(i)115V / 60Hz
Amp	5.3 A	8.3 A	9.0 A
Lamp	25W	25W	25W
Cord Length	9.2 ft.	9.2 ft.	9.2 ft.
Plug-In	NEMA 5-15P	NEMA 5-15P	NEMA 5-15p

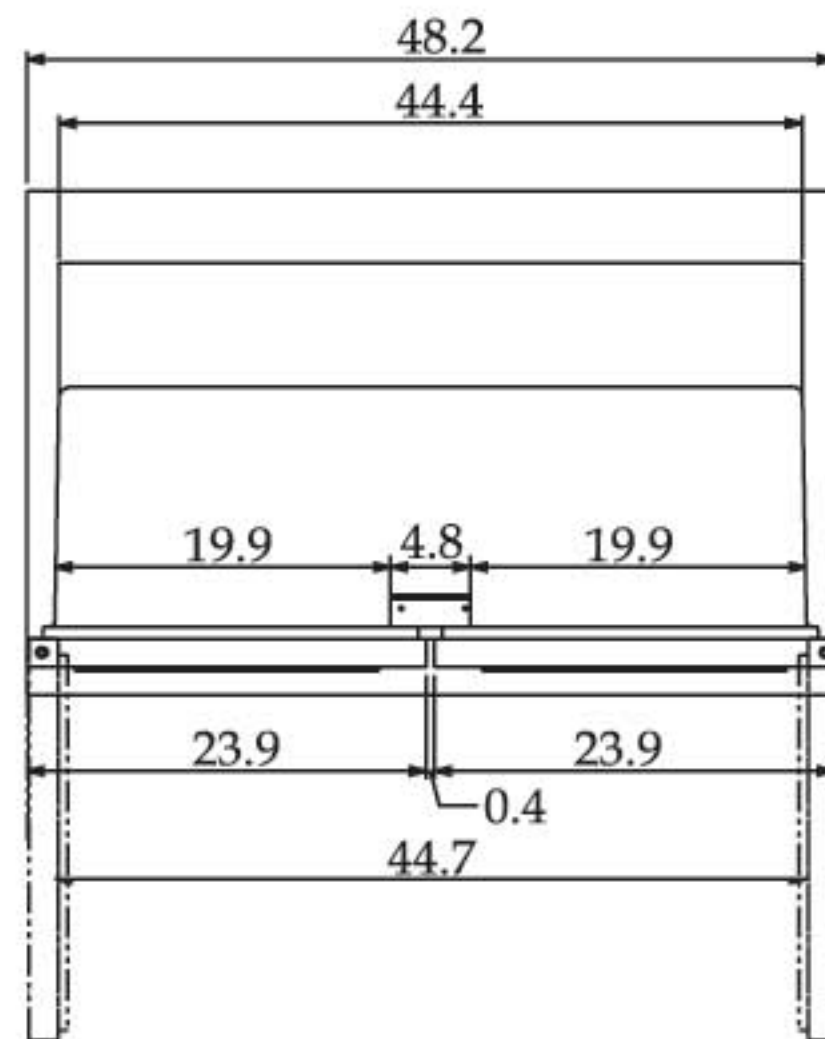
- SELF-CONTAINED SYSTEM
- 5" SWIVEL CASTERS
- LEGS AVAILABLE FOR ALL MODELS (OPTION)
- REMOTE CABINETS AND CONDENSING UNITS AVAILABLE FOR ALL MODELS.

*Design and specifications subject to change without notice.

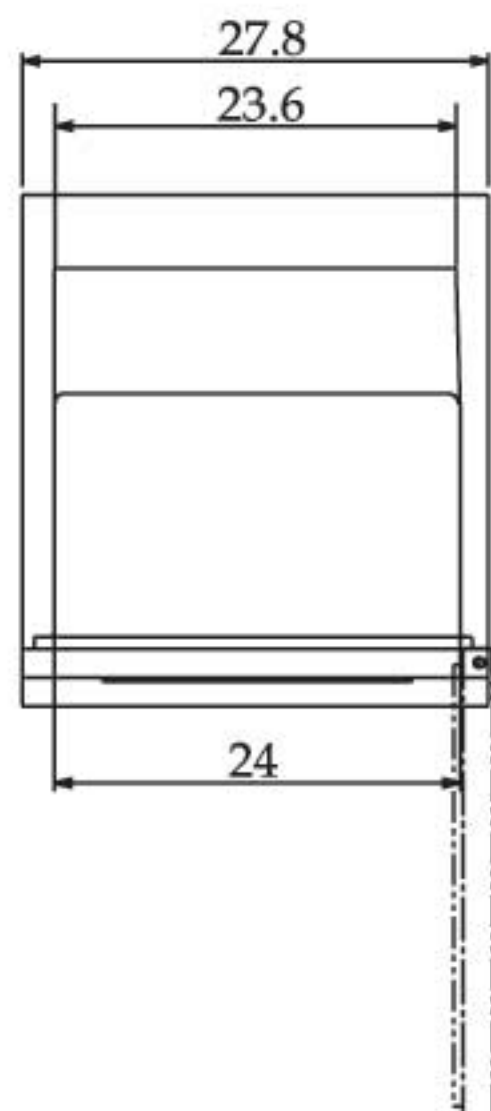
- **WARRANTY : 2 Years Labor and Parts Warranty**
Additional 3 Years Warranty on Compressor



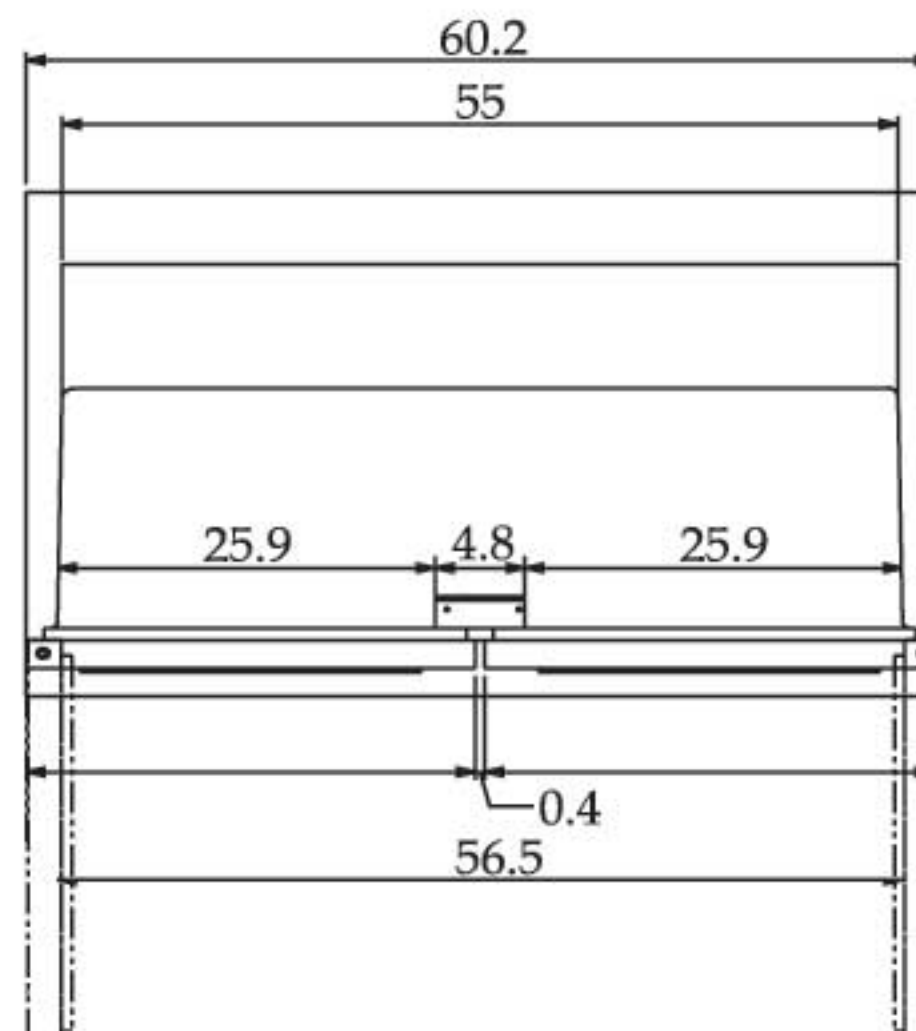
SIDE VIEW



TUF-48SD PLAN VIEW



TUF-28SD PLAN VIEW



TUF-60SD PLAN VIEW

(unit : inch)