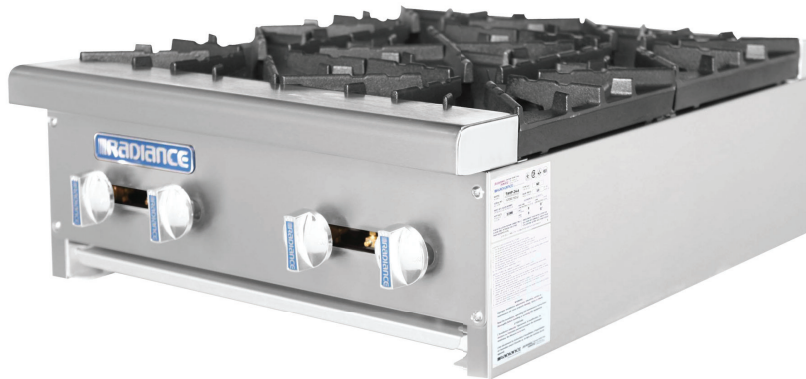


High Output Counter Top Hot Plate

Model : TAHP-24-4



FEATURES & BENEFITS

- **Stainless steel front, sides and 4" front top ledge**
- **Easy cleaning, detachable lift-off 2 piece burner**
- **Center concentrated design high performance 32,000 BTU/hr burner**
- **Removable 12" x 12" heavy cast-iron top grates**
- **Grooved design top grate ensure direct heat to cooking surface**
- **Removable full width grease pan**
- **Top grate is designed to allow pot to slide without lifting**
- **Ergonomically designed heat resistant PPS (Poly Phenylene Sulfide) On-Off knob**
- **Adjustable standing pilot for each burner**
- **3/4" rear gas connection and gas pressure regulator**
- **2" stainless steel legs included**



Model	#of Burners	Total BTUs	Crated Weight (lbs.)	W x D x H [†] (inches)
TAHP-24-4	4	128,000	166	24 x 30 x 10

High Output Counter Top Hot Plate

Model : TAHP-24-4

DATA	
Gas Type	NAT/LP Convertible
Gas Connection	3/4"
Regulator	3/4"
Gas Pressure	NAT : 5W.C" / LPG : 10W.C"
BTU	128,000
SHIPPING DATA	
Class	85
Length (in.)	24 (610mm)
Depth (in.) *	30 (762mm)
Height (in.) †	10 (254mm)
Net / Gross Weight (lbs.)	132 / 166

Design and specifications subject to change without notice.

Actual shipping weight may differ due to extra packing materials for product protection.

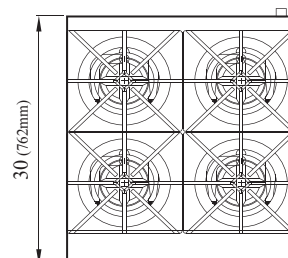
* Depth does not include 3/4" for rear gas connection.

† Height does not include 2" for leg height.

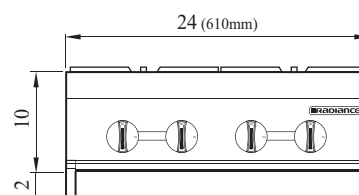
■ WARRANTY : 1 Year Labor and Parts Warranty

PLAN VIEW

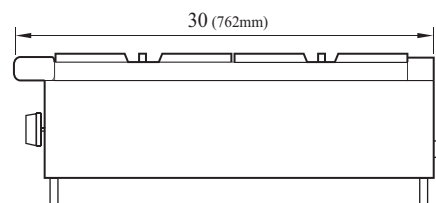
(unit : inch)



TOP VIEW



FRONT VIEW



SIDE VIEW

Ver.20251105



■ Parts and Warranty: 800-500-3519

BTI BAKE TECH
INNOVATION

BESTA

RADIANCE